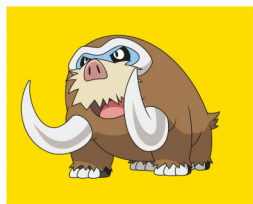
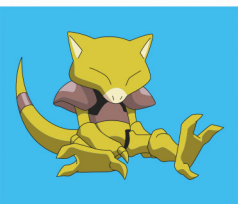


ULTIMATE

POKÉMON™

ESSENTIAL HANDBOOK



ULTIMATE

POKÉMON™

ESSENTIAL HANDBOOK

Published in the UK by Scholastic, 2022
Euston House, 24 Eversholt Street, London, NW1 1DB
Scholastic Ireland, 89E Lagan Road, Dublin Industrial Estate, Glasnevin, Dublin, D11 HP5F

SCHOLASTIC and associated logos are trademarks and/or registered
trademarks of Scholastic Inc.

This book is a work of fiction. Names, characters, places, and incidents are either the
product of the author's imagination or are used fictitiously, and any resemblance to actual
persons, living or dead, business establishments, events, or locales is entirely coincidental.

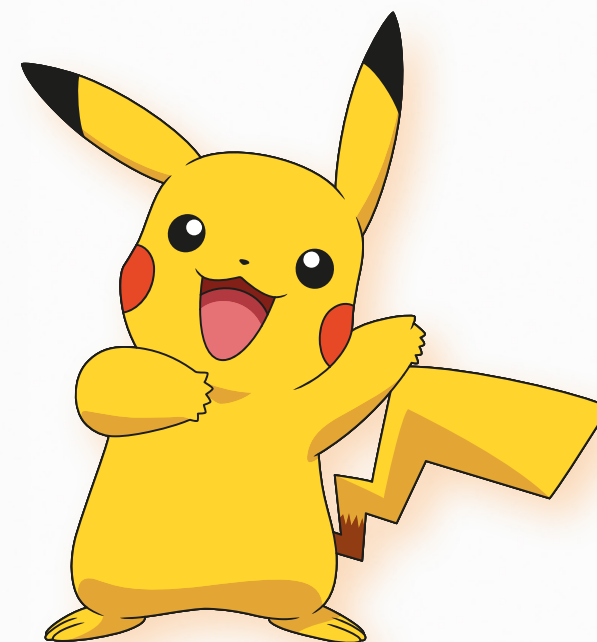
ISBN 978 07023 1830 6

A CIP catalogue record for this book is available from the British Library.

All rights reserved.

This book is sold subject to the condition that it shall not, by way of trade or
otherwise, be lent, hired out or otherwise circulated in any form of binding or
cover other than that in which it is published. No part of this publication may be
reproduced, stored in a retrieval system, or transmitted in any form or by any other
means (electronic, mechanical, photocopying, recording or otherwise) without
prior written permission of Scholastic Limited.

www.scholastic.co.uk



 **SCHOLASTIC**

PIKACHU

HOW TO SAY IT: PEE-ka-choo

Mouse Pokémon

REGIONS:

ALOLA
GALAR
KALOS
(CENTRAL)
KANTO

Pikachu can generate powerful electricity. When Pikachu greet each other, they exchange electricity by touching their tails together.

TYPE: ELECTRIC

HEIGHT: 1 ft 4 in (0.4 m)

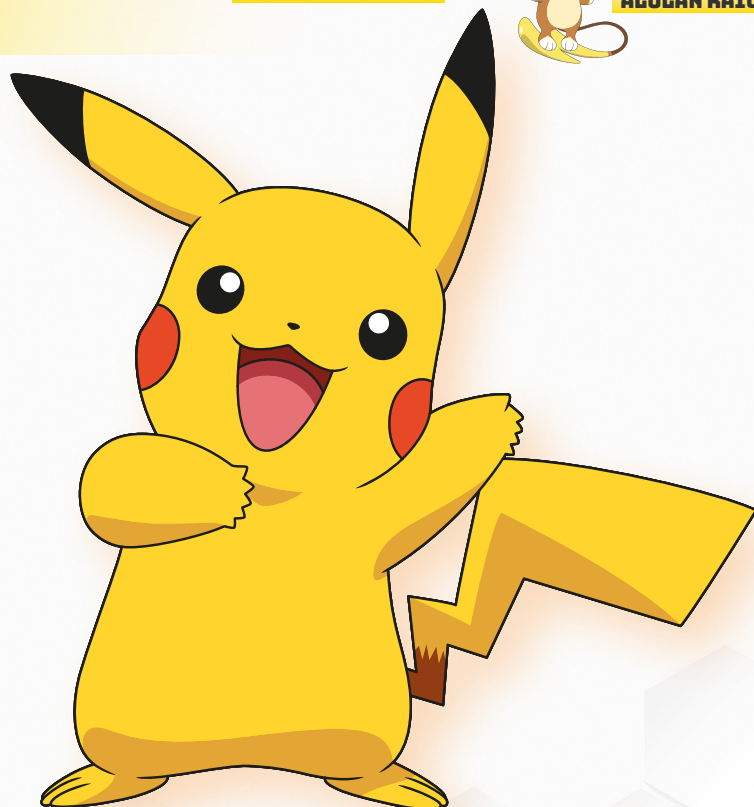
WEIGHT: 13.2 lb (6 kg)

SOME POSSIBLE MOVES:

THUNDER SHOCK

LIGHT SCREEN

TAIL WHIP



**PIKACHU
LIBRE**

SPECIAL MOVE:
Flying Press



**PIKACHU
BELLE**

SPECIAL MOVE:
Icicle Crash



**PIKACHU
PHD**

SPECIAL MOVE:
Electric Terrain



**PIKACHU
POP STAR**

SPECIAL MOVE:
Draining Kiss



**PIKACHU
ROCK STAR**

SPECIAL MOVE:
Meteor Mash

DOES NOT EVOLVE

GIGANTAMAX PIKACHU

Only certain Pokémon can Gigantamax. The process can change the Pokémon's size and appearance. Pikachu's power expands, forming its supersized body and ginormous tail.

TYNAMO

HOW TO SAY IT: TIE-nah-moh

EleFish Pokémon

REGION:
UNOVA

TYPE: ELECTRIC

HEIGHT: 8 in (0.2 m)

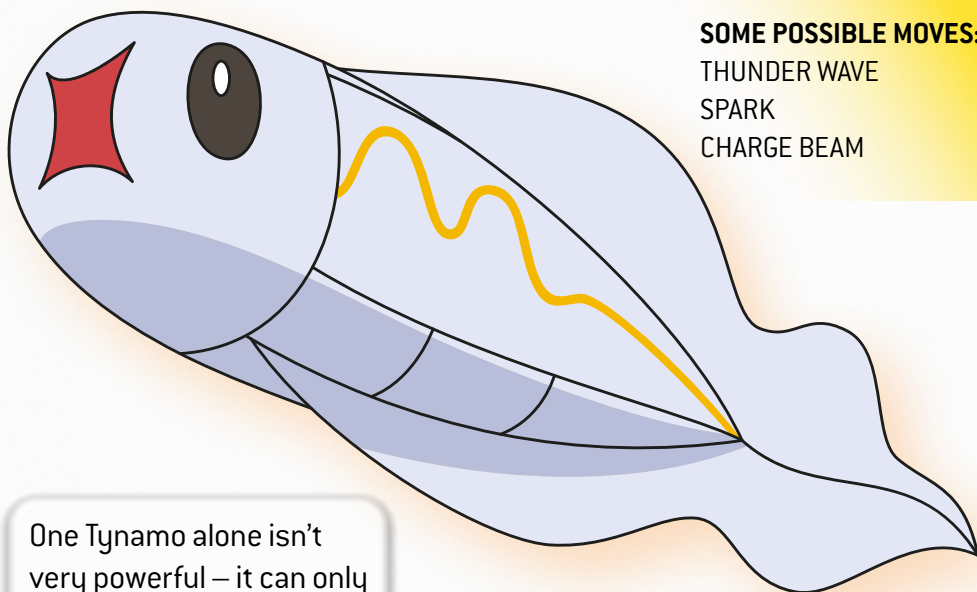
WEIGHT: 0.7 lb (0.3 kg)

SOME POSSIBLE MOVES:

THUNDER WAVE

SPARK

CHARGE BEAM



One Tynamo alone isn't very powerful – it can only produce a tiny amount of electricity. When a group of Tynamo gathers they are much more powerful.



TYNAMO

ELEKTRIK

ELEKTROSS

TYPE: ELECTRIC

HEIGHT: 2 ft 7in (0.8 m)

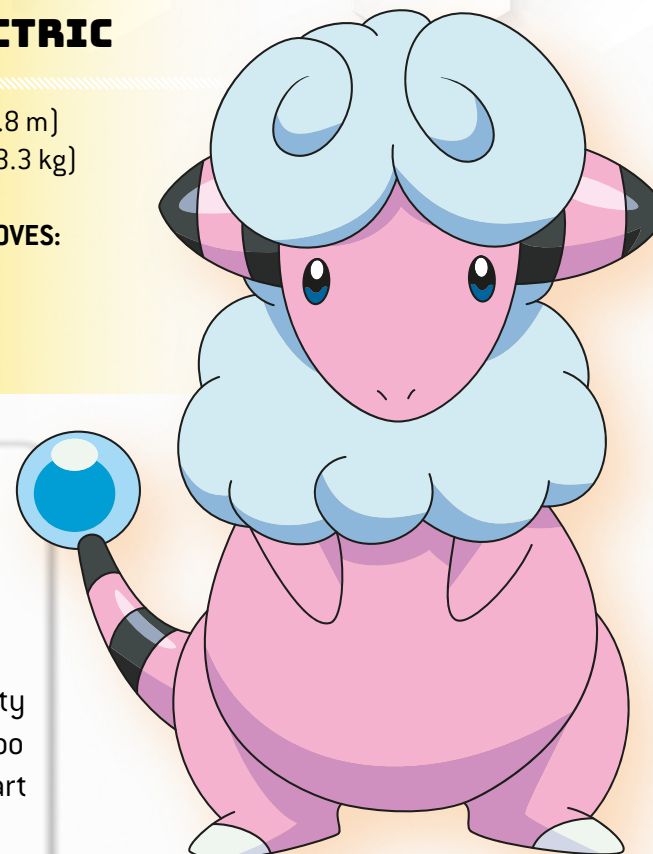
WEIGHT: 29.3 lb (13.3 kg)

SOME POSSIBLE MOVES:

COTTON SPORE

THUNDER WAVE

POWER GEM



Flaaffy has rubbery skin with fleecy patches. The fluffy fleece stores electricity and if it holds too much, it will start to lose hair in those patches.



MAREEP

FLAAFFY

AMPHAROS

MEGA AMPHAROS

REGIONS:
ALOHA
JOHTO
KALOS
(COASTAL)

FLAAFFY

HOW TO SAY IT: FLAH-fee

Wool Pokémon

LEDYBA

HOW TO SAY IT: LEH-dee-bah

Five Star Pokémon

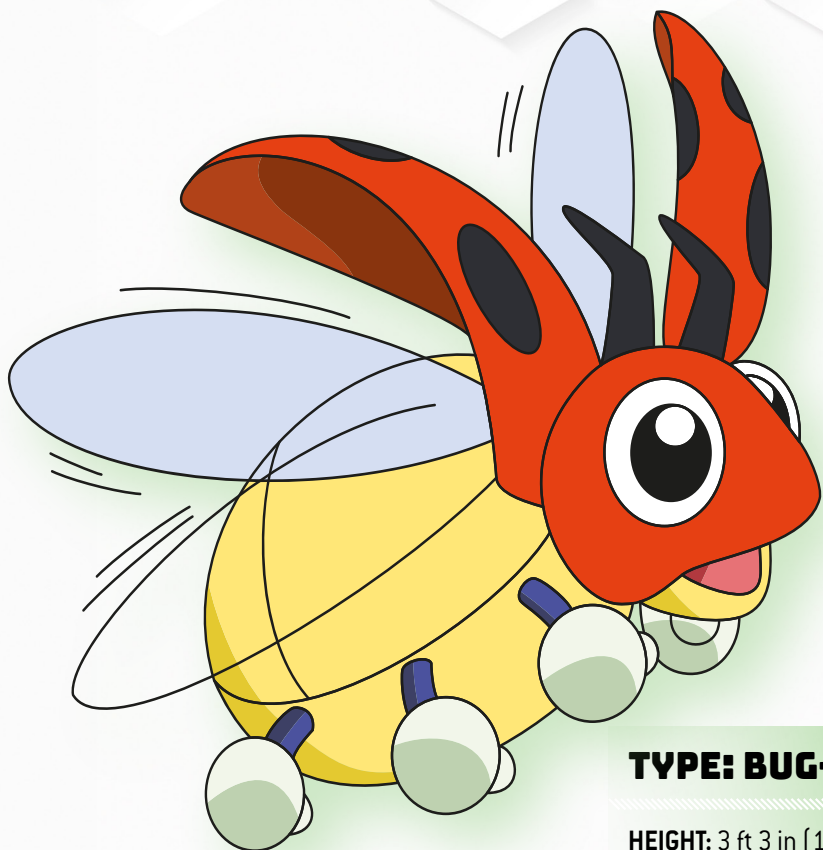
REGIONS:
ALOLA
JOHTO
KALOS
(CENTRAL)



LEDYBA



LEDIAN



TYPE: BUG-FLYING

HEIGHT: 3 ft 3 in (1 m)
WEIGHT: 23.8 lb (10.8 kg)

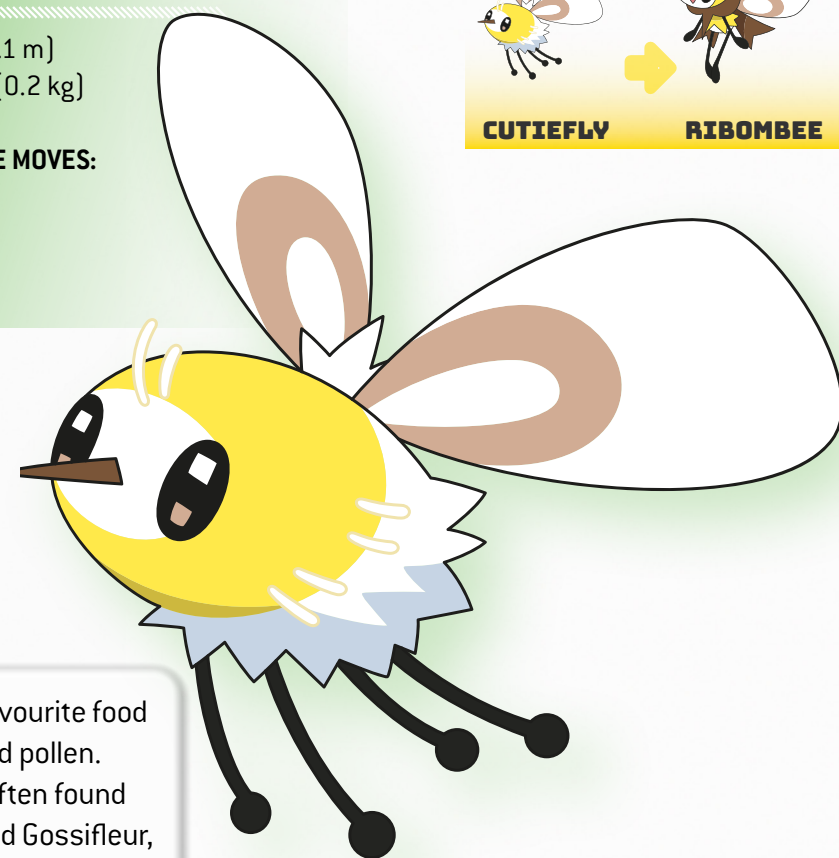
SOME POSSIBLE MOVES:
SWIFT
LIGHT SCREEN
SILVER WIND

Ledyba can be very cowardly so they stay in groups to protect their nest.

TYPE: BUG-FAIRY

HEIGHT: 4 in (0.1 m)
WEIGHT: 0.4 lb (0.2 kg)

SOME POSSIBLE MOVES:
BUG BUZZ
FAIRY WIND
SWEET SCENT



Cutiefly's favourite food is nectar and pollen. Cutiefly is often found flying around Gossifleur, trying to find some pollen.

CUTIEFLY

HOW TO SAY IT: KYOO-tee-fly

Bee Fly Pokémon

REGIONS:
ALOLA
GALAR



CUTIEFLY



RIBOMBEE

GROWLITHE

HOW TO SAY IT: GROWL-lith

Puppy Pokémon

REGIONS:
ALOHA
GALAR
KANTO

TYPE: FIRE

HEIGHT: 2 ft 4 in (0.7 m)

WEIGHT: 41.9 lb (19 kg)

SOME POSSIBLE MOVES:

HOWL

HELPING HAND

CRUNCH

Growlithe is brave and trustworthy. It is extremely loyal to its Trainer and will do all it can to protect them from harm.



REGION:
UNOVA

VICTINI

HOW TO SAY IT: vik-TEE-nee

Victory Pokémon

TYPE: PSYCHIC-FIRE

HEIGHT: 1 ft 4 in (0.4 m)

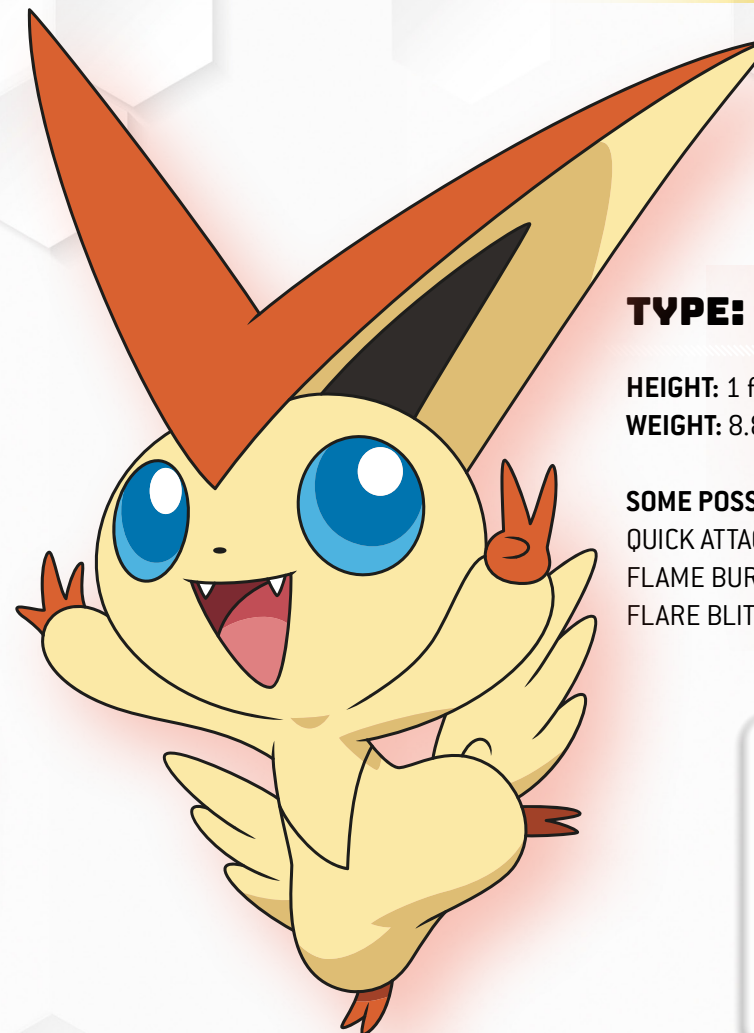
WEIGHT: 8.8 lb (4 kg)

SOME POSSIBLE MOVES:

QUICK ATTACK

FLAME BURST

FLARE BLITZ



Victini can create never-ending energy and is often victorious. Trainers with this Pokémon can have great success.

DOES NOT EVOLVE

CHARIZARD

HOW TO SAY IT: CHAR-iz-ard

Flame Pokémon

REGIONS:
GALAR
KALOS
(CENTRAL)
KANTO

TYPE: FIRE-FLYING

HEIGHT: 5 ft 7 in (1.7 m)

WEIGHT: 199.5 lb (90.5 kg)

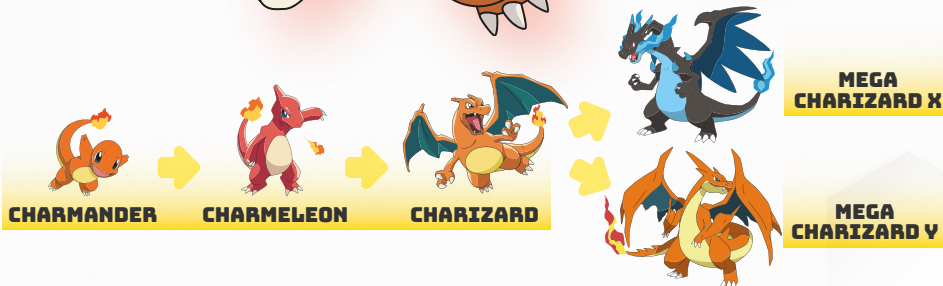
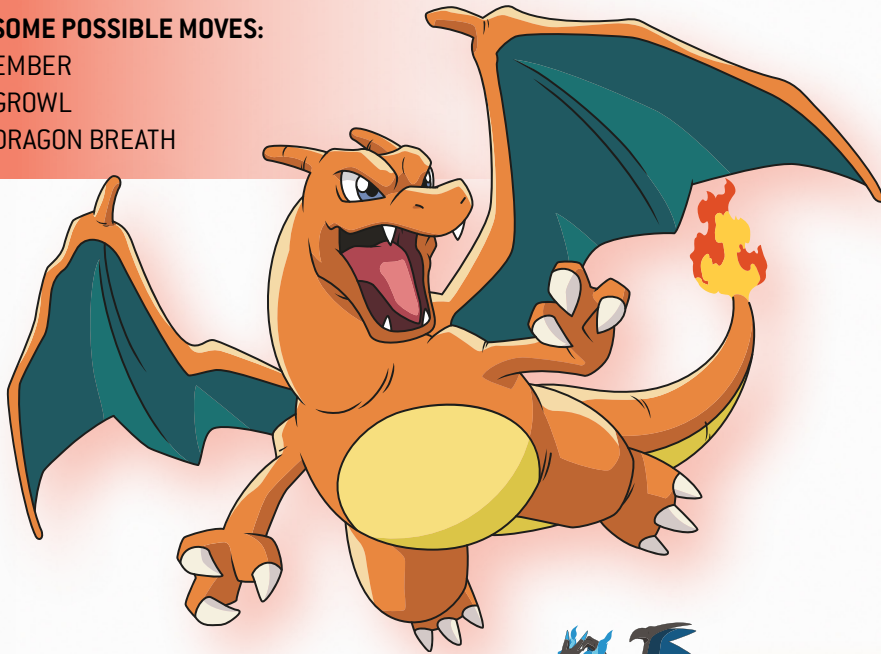
SOME POSSIBLE MOVES:

EMBER

GROWL

DRAGON BREATH

Charizard can create fire that is hot enough to melt stone. This Pokémon can fly higher than 4,000 feet!



REGIONS:
ALOLA
GALAR
KALOS
(CENTRAL)

PANGORO

HOW TO SAY IT: PAN-go-roh

Daunting Pokémon

TYPE: FIGHTING-DARK

HEIGHT: 6 ft 11 in (2.1 m)

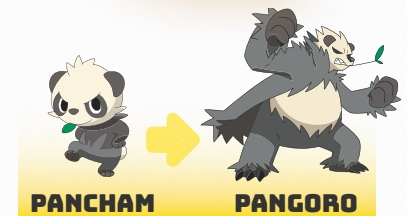
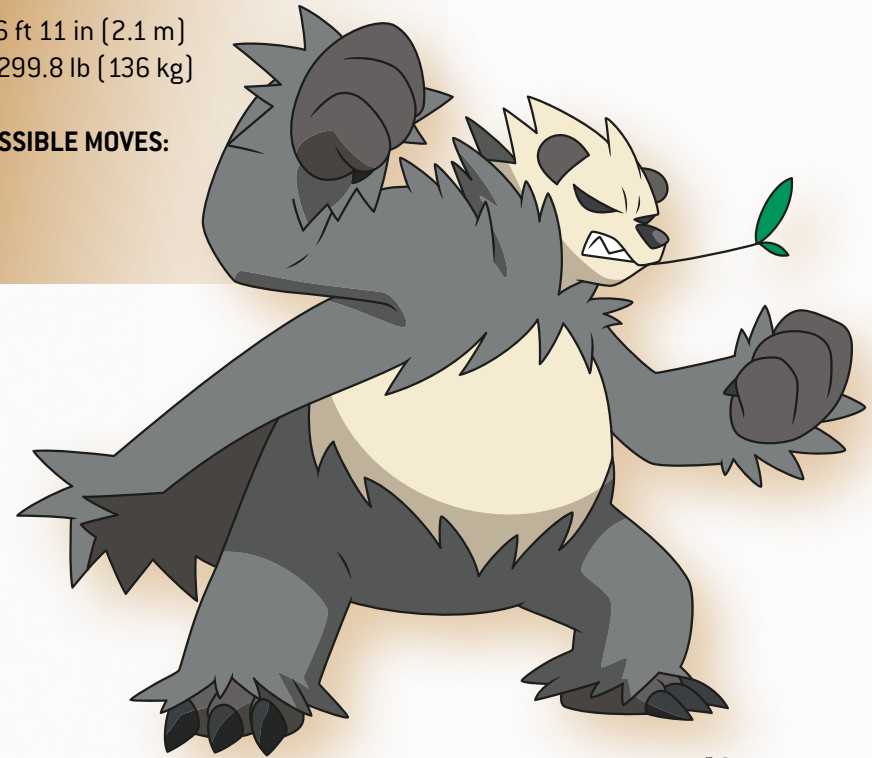
WEIGHT: 299.8 lb (136 kg)

SOME POSSIBLE MOVES:

LEER

CRUNCH

WORK UP



Pangoro has a short temper and is super strong. It carries a leaf in its mouth, and Pangoro will use this to guess which moves its opponents will use.

GALARIAN FARFETCH'D

HOW TO SAY IT: FAR-fetched

Wild Duck Pokémon

REGION:
GALAR

TYPE: FIGHTING

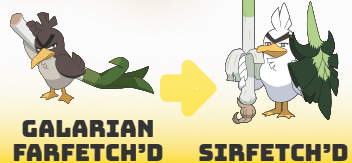
HEIGHT: 2 ft 7 in (0.8 m)

WEIGHT: 92.6 lb (42 kg)

SOME POSSIBLE MOVES:

PECK
BRAVE BIRD
DETECT

The Galar region Farfetch'd are fearless warriors, and they carry big leeks.



GALARIAN
FARFETCH'D

SIRFETCH'D

Seviper live in grasslands and savannas. They do not get on well with Zangoose.

REGIONS:
HOENN
KALOS
(COASTAL)

SEVIPER

HOW TO SAY IT: seh-VY-per

Fang Snake Pokémon

TYPE: POISON

HEIGHT: 8 ft 10 in (2.7 m)

WEIGHT: 115.7 lb (52.5 kg)

SOME POSSIBLE MOVES:

LICK
HAZE
GLARE



DOES NOT EVOLVE

WEEZING

HOW TO SAY IT: WEEZ-ing
Poison Gas Pokémon

REGION:
KANTO

TYPE: POISON

HEIGHT: 3 ft 11 in (1.2 m)

WEIGHT: 20.9 lb (9.5 kg)

SOME POSSIBLE MOVES:

SMOKESCREEN

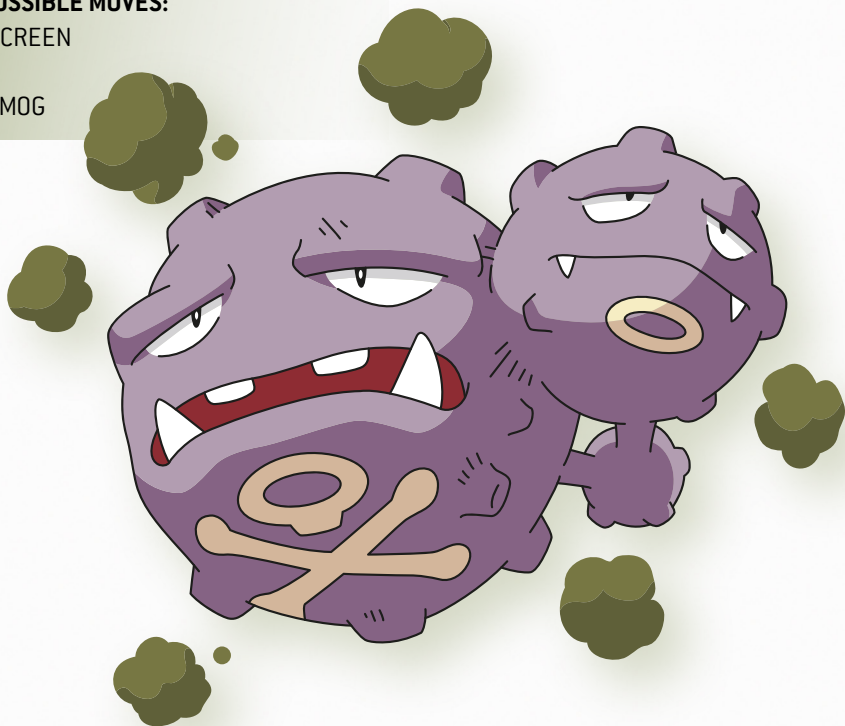
SLUDGE

CLEAR SMOG



KOFFING

WEEZING



Weezing has two bodies which produce harmful gases.

MUK

HOW TO SAY IT: MUCK
Sludge Pokémon

REGION:
KANTO

TYPE: POISON

HEIGHT: 3 ft 11 in (1.2 m)

WEIGHT: 66.1 lb (30 kg)

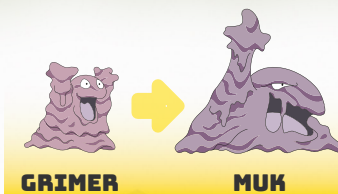
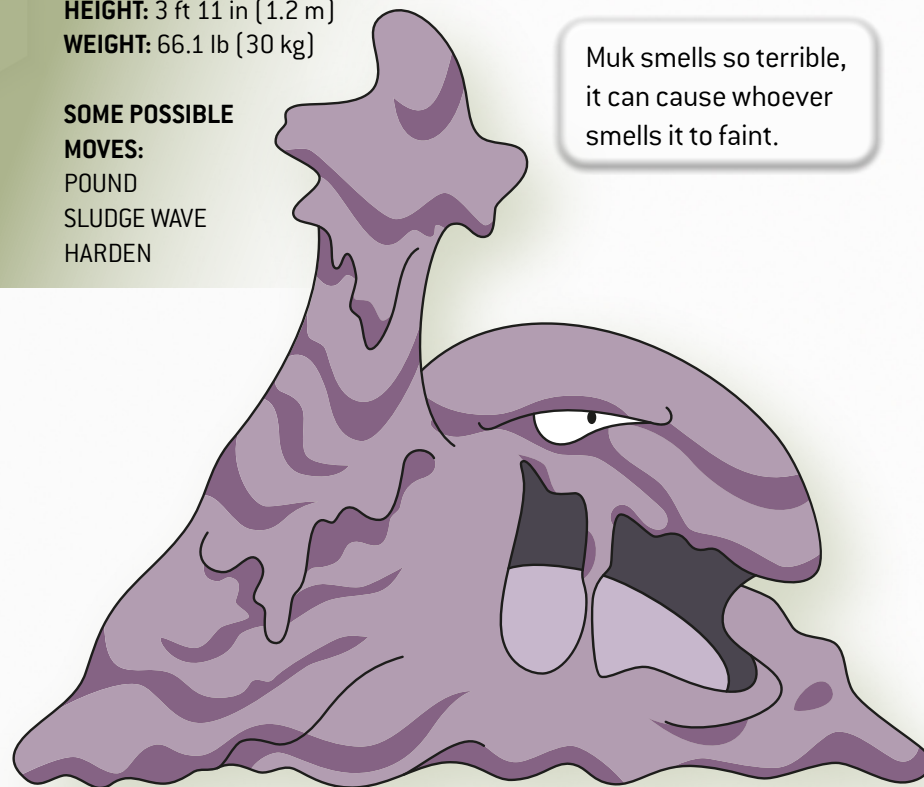
SOME POSSIBLE MOVES:

POUND

SLUDGE WAVE

HARDEN

Muk smells so terrible, it can cause whoever smells it to faint.



GRIMER

MUK

ALCREMIE

HOW TO SAY IT: AL-kruh-mee

Cream Pokémon

REGION:
GALAR

TYPE: FAIRY

HEIGHT: 1 ft (0.3 m)

WEIGHT: 1.1 lb (0.5 kg)

SOME POSSIBLE MOVES:

DECORATE

RECOVER

SWEET SCENT

Alcremie can create berries and cream for its Trainer. When it is happy, the cream it makes becomes richer and sweeter.



MILCERY

ALCREMIE

REGIONS:
GALAR
JOHTO

TOGEPI

HOW TO SAY IT: TOE-ghep-pee

Spike Ball Pokémon

TYPE: FAIRY

HEIGHT: 1 ft (0.3 m)

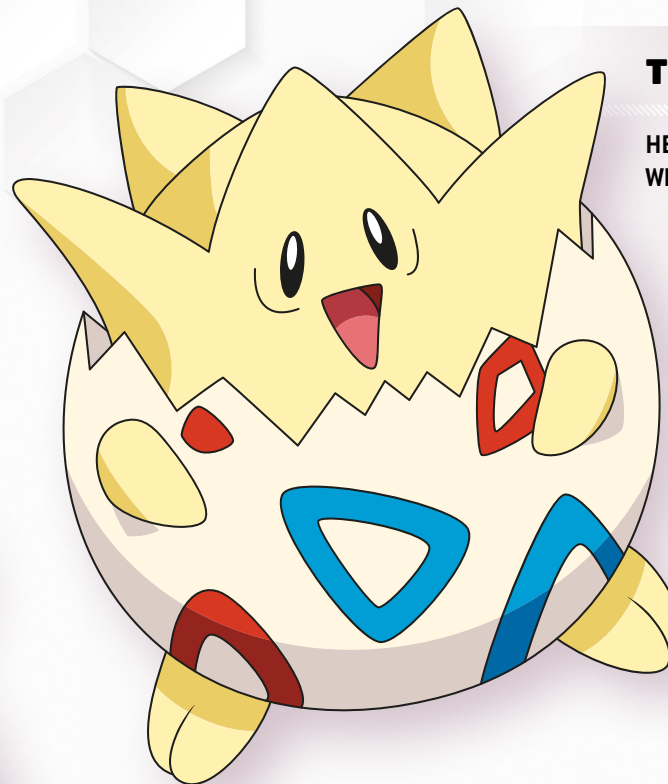
WEIGHT: 3.3 lb (1.5 kg)

SOME POSSIBLE MOVES:

CHARM

ANCIENT POWER

WISH



Togepi's shell is filled with happiness. When it's treated kindly it will share good luck.



TOGEPI

TOGETIC

TOGEKISS

FLAPPLE

HOW TO SAY IT: FLAP-puhl

Apple Wing Pokémon

REGION:
GALAR

TYPE: GRASS-DRAGON

HEIGHT: 1 ft [0.3 m]

WEIGHT: 2.2 lb [1 kg]

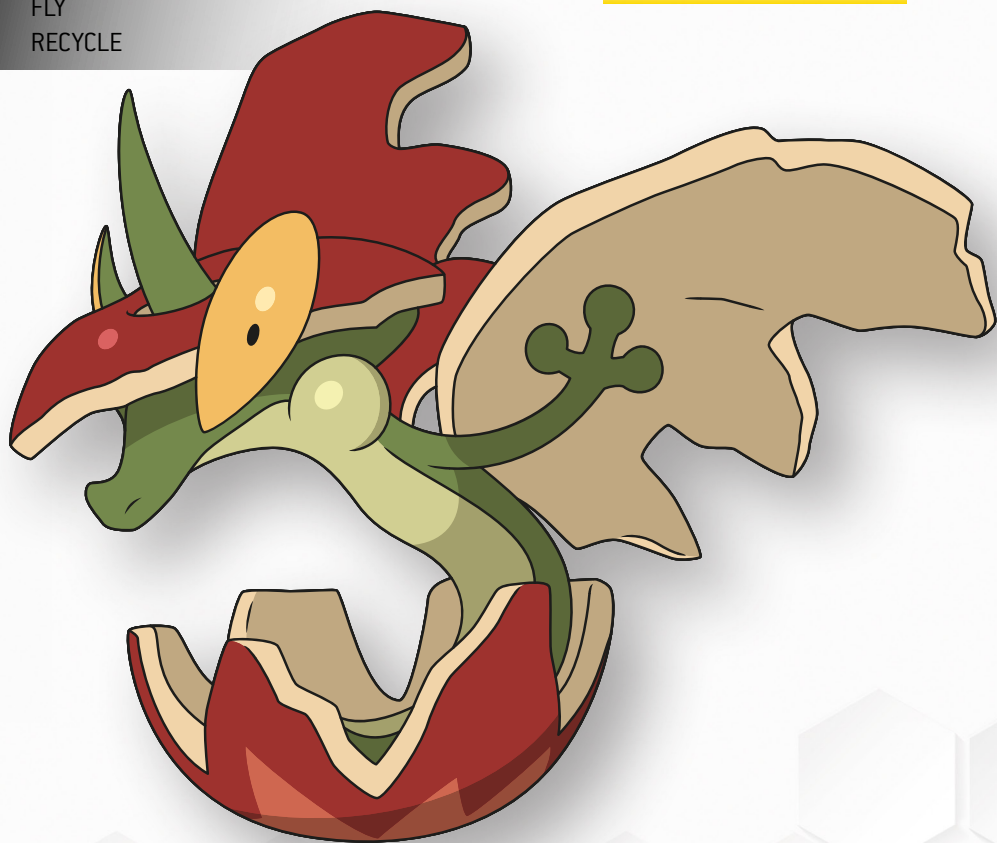
SOME POSSIBLE MOVES:

DRAGON BREATH

FLY

RECYCLE

Flapple evolved from eating a sour apple. It flies using wings made from apple skin.



REGIONS:
AOLA
GALAR
KALOS
(MOUNTAIN)

NOIVERN

HOW TO SAY IT: NOY-vurn

Sound Wave Pokémon

TYPE: FLYING-DRAGON

HEIGHT: 4 ft 11 in [1.5 m]

WEIGHT: 187.4 lb [85 kg]

SOME POSSIBLE MOVES:

ABSORB

MOONLIGHT

SUPERSONIC

Noivern can make enemies weaker using ultrasonic waves.



TYRUNT

HOW TO SAY IT: TIE-runt
Royal Heir Pokémon

REGIONS:
ALOLA
KALOS
(COASTAL)

TYPE: ROCK-DRAGON

HEIGHT: 2 ft 7 in (0.8 m)
WEIGHT: 57.3 lb (26 kg)

SOME POSSIBLE MOVES:

TAIL WHIP
ROAR
STEALTH ROCK

Tyrunt's large jaw has incredible strength and power. Tyrunt may just be trying to play, but sometimes it can be a little too rough.



REGIONS:
GALAR
KALOS
(MOUNTAIN)
UNOVA

CUBCHOO

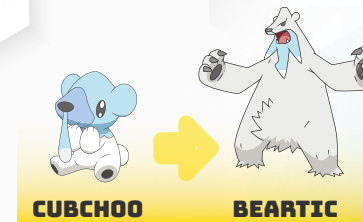
HOW TO SAY IT: cub-CHOO
Chill Pokémon

TYPE: ICE

HEIGHT: 1 ft 8 in (0.5 m)
WEIGHT: 18.7 lb (8.5 kg)

SOME POSSIBLE MOVES:

BLIZZARD
HAIL
REST



When Cubchoo is healthy, the goo from its nose becomes sticky and thick.

DELIBIRD

HOW TO SAY IT: DELL-ee-bird

Delivery Pokémon

REGIONS:

ALOLA
GALAR
JOHTO
KALOS
(MOUNTAIN)

TYPE: ICE-FLYING

HEIGHT: 2 ft 11 in (0.9 m)

WEIGHT: 35.3 lb (16 kg)

SOME POSSIBLE

MOVES:

PRESENT

DRILL PECK

Delibird likes to share the food it finds with people and Pokémon.

There are stories about people who were lost that Delibird saved by sharing food with them.



DOES NOT EVOLVE

REGIONS:

GALAR
KALOS
(MOUNTAIN)
SINNOH

MAMOSWINE

HOW TO SAY IT: MAM-oh-swine

Twin Tusk Pokémon

TYPE: ICE-GROUND

HEIGHT: 8 ft 2 in (2.5 m)

WEIGHT: 641.5 lb (291 kg)

SOME POSSIBLE MOVES:

FLAIL

MIST

POWDER SNOW



ABRA

HOW TO SAY IT: AB-ra

Psi Pokémon

REGIONS:
ALOLA
KALOS
(CENTRAL)
KANTO

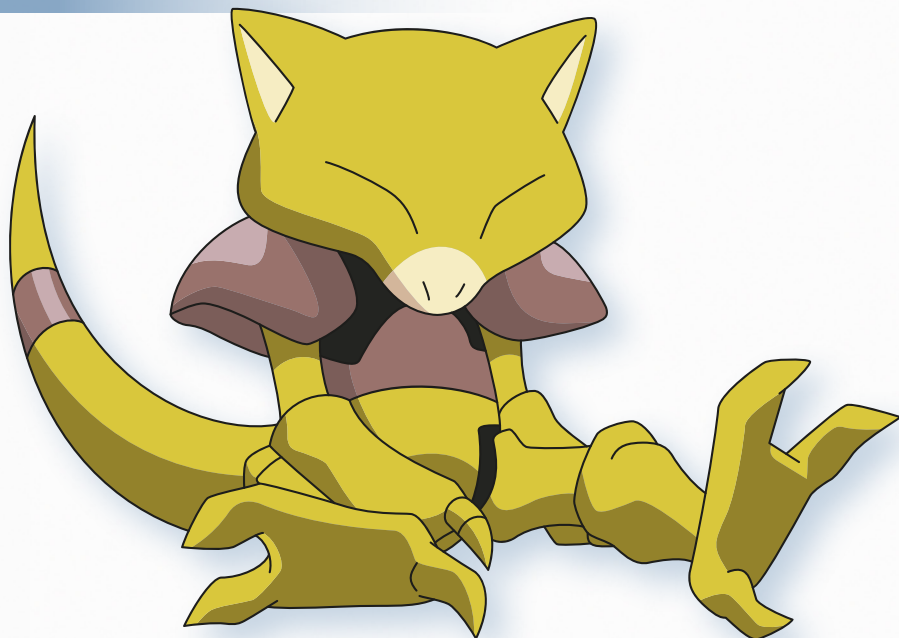
TYPE: PSYCHIC

HEIGHT: 2 ft 11 in (0.9 m)

WEIGHT: 43.0 lb (19.5 kg)

POSSIBLE MOVE: TELEPORT

Abra's mind has magical powers while it sleeps. The dreams Abra has can change the powers that the Pokémon develops. Abra can learn more moves once it evolves to Kadabra.



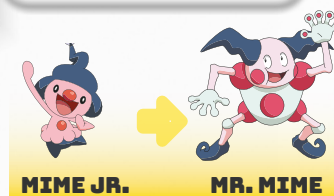
ABRA

KADABRA

ALAKAZAM

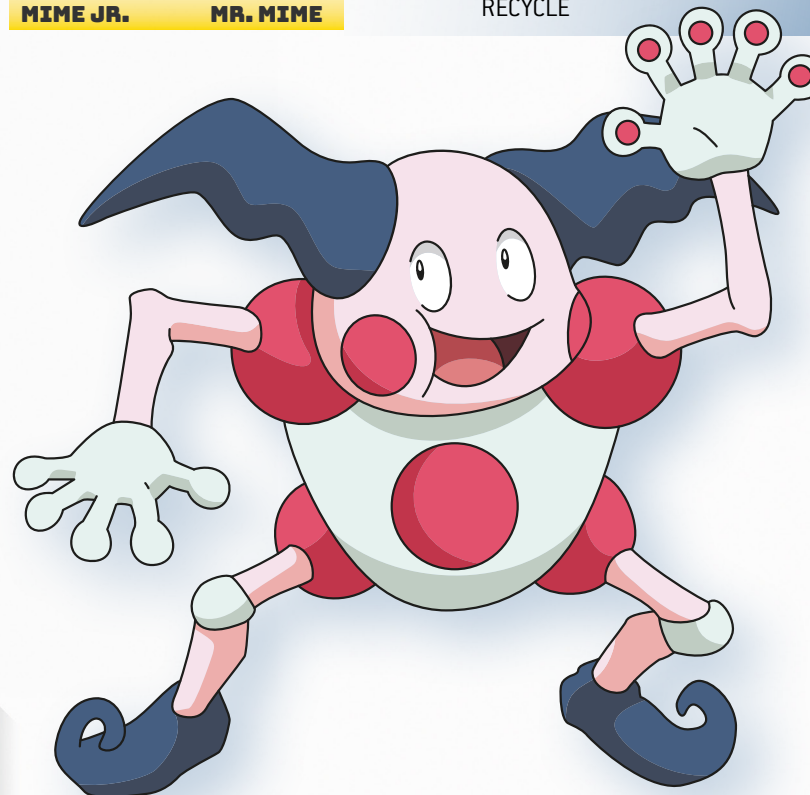
MEGA ALAKAZAM

Mr. Mime is known for its brilliant pantomime skills. It protects itself by creating walls with its fingers.



MIME JR.

MR. MIME



REGIONS:
ALOLA
KALOS
(COASTAL)
KANTO

MR. MIME

HOW TO SAY IT: MIS-ter MIME

Barrier Pokémon

TYPE: PSYCHIC-FAIRY

HEIGHT: 4 ft 3 in (1.3 m)

WEIGHT: 120.2 lb (54.5 kg)

SOME POSSIBLE MOVES:

COPYCAT

MIMIC

RECYCLE

GARDEVOIR

HOW TO SAY IT: GAR-dee-VWAR

Embrace Pokémon

REGIONS:
GALAR
HOENN
KALOS
(CENTRAL)

TYPE: PSYCHIC-FAIRY

HEIGHT: 5 ft 3 in (1.6 m)

WEIGHT: 106.7 lb (48.4 kg)

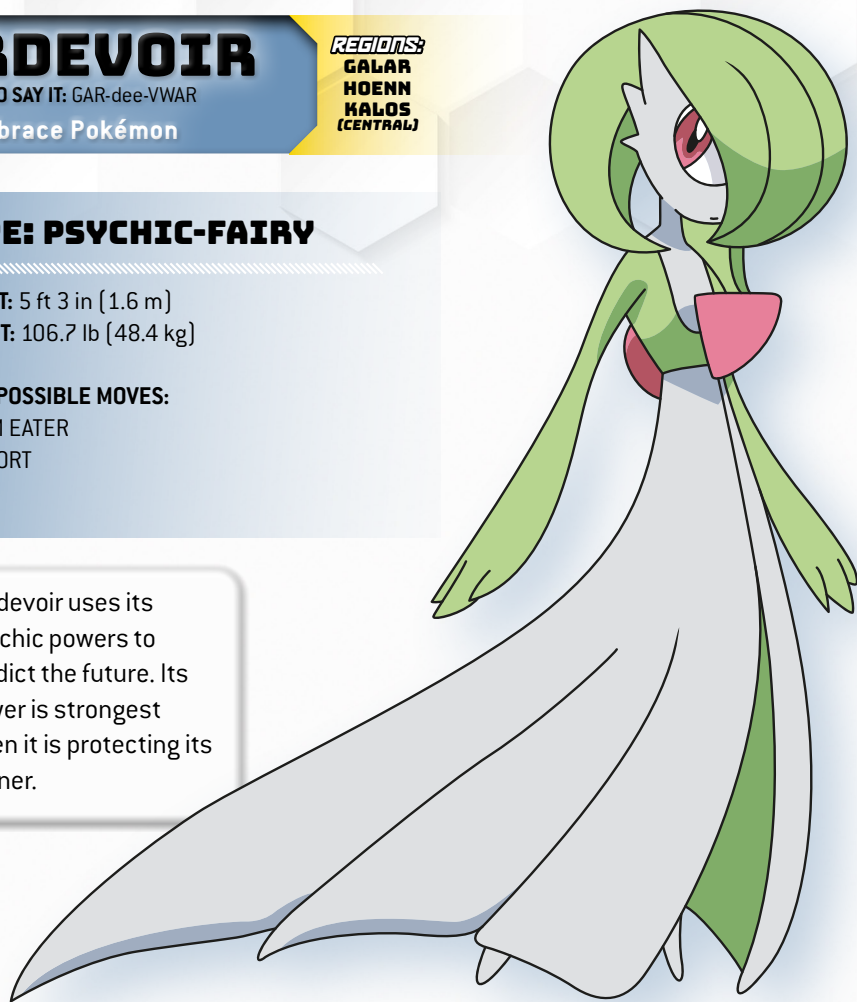
SOME POSSIBLE MOVES:

DREAM EATER

TELEPORT

WISH

Gardevoir uses its psychic powers to predict the future. Its power is strongest when it is protecting its Trainer.



RALTS

KIRLIA

GARDEVOIR

MEGA GARDEVOIR

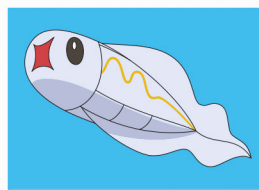


THE POKÉMON ESSENTIAL HANDBOOK

ULTIMATE EDITION

CONTAINS STATS AND FACTS
ON THESE TYPES OF POKÉMON:

ELECTRIC • **FIRE** • **FIGHTING**
DRAGON • **PSYCHIC** • **POISON**
BUG • **FAIRY** • **ICE**



©2022 Pokémon. ©1995–2022 Nintendo / Creatures Inc. / GAME FREAK inc.
TM, ®, and character names are trademarks of Nintendo.

Stock photo © Shutterstock.com

Made for McDonald's
2022 McDonald's, the Golden Arches logo,
the Happy Meal box design and Happy Readers are trade marks
of McDonald's Corporation and its affiliates

 **SCHOLASTIC**